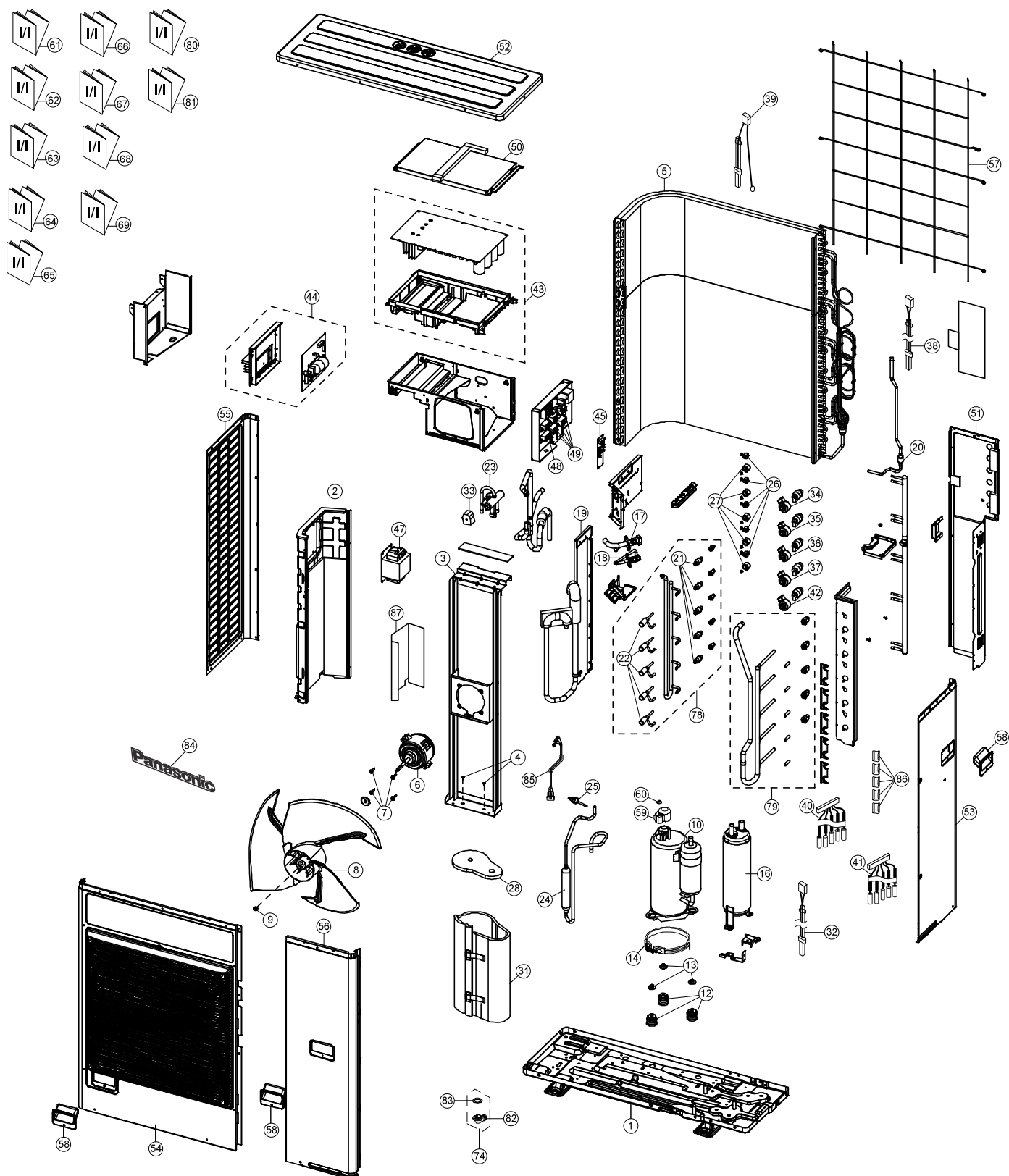



20. Exploded View and Replacement Parts List



Note








The above exploded view is for the purpose of parts disassembly and replacement.
The non-numbered parts are not kept as standard service parts.

SAFETY	REF.NO.	DESCRIPTION & NAME	QTY.	CU-4Z80TBE	REMARK
	1	BASE PAN ASS'Y	1	CWD52K1345A	
	2	SOUND - PROOF BOARD	1	CWH151367	
	3	FAN MOTOR BRACKET	1	CWD54K1081	
	4	SCREW - FAN MOTOR BRACKET	3	CWH551217	
	5	CONDENSER COMPLETE	1	ACXB32C14960	
	6	FAN MOTOR	1	L6CBYYL0098	O
	7	SCREW - FAN MOTOR MOUNT	4	CWH551323	
	8	PROPELLER FAN ASSY	1	CWH03K1075	
	9	NUT	1	CWH561092	
	10	COMPRESSOR	1	9KD240XBB21	O
	12	BUSHING - COMPRESSOR MOUNT	3	CWH50055	
	13	NUT - COMPRESSOR MOUNT	3	CWH561049	
	14	CRANKCASE HEATER	1	CWA341093	
	16	ACCUMULATOR	1	CWB131064	
	17	3-WAYS VALVE (GAS)	1	CWB011769	O
	18	3-WAY VALVE (LIQUID)	1	CWB011770	O
	19	HOLDER COUPLING	1	CWH351262	
	20	STRAINER	1	CWB11061	
	21	STRAINER	4	CWB111081	
	22	EXPANSION VALVE	4	CWB051029	O
	23	4-WAYS VALVE	1	CWB001026J	O
	24	DISCHARGE MUFFLER	1	ACXB12-00650	
	25	HEATING PRESSURE SWITCH	1	CWA101013	O
	26	FLARE NUT (1/4)	4	CWT251030	
	27	FLARE NUT (3/8)	4	CWT251031	
	28	SOUND PROOF MATERIAL	1	CWG302804	
	31	SOUND PROOF MATERIAL	1	CWG302801	
	32	SENSOR - COMPLETE (DISCHARGE TEMP SENSOR CN-DIS)	1	CWA50C3091	O
	33	V-COIL CO. (4 WAY VALVE CN-HOT)	1	CWA43C2586	O
	34	V-COIL CO. (EXPAND VALVE - WHITE CN-EV1)	1	CWA43C2587	O
	35	V-COIL CO. (EXPAND VALVE - YELLOW CN-EV2)	1	CWA43C2588	O
	36	V-COIL CO.(EXPAND VALVE-BLUE CN-EV3)	1	CWA43C2589	O
	37	V-COIL CO. (EXPAND VALVE - RED CN-EV4)	1	CWA43C2590	O
	38	SENSOR - COMPLETE (DEFROST TEMP SENSOR CN-TH2)	1	CWA50C3087	O
	39	SENSOR - COMPLETE (OUTDOOR TEMP SENSOR CN-TH1)	1	ACXA50C00930	O
	40	SENSOR - COMPLETE (CN-TH4)	1	CWA50C3131	O
	41	SENSOR - COMPLETE (CN-TH3)	1	CWA50C3132	O
	43	ELECTRONIC CONTROLLER - MAIN	1	ACXA73C30450R	O
	44	ELECTRONIC CONTROLLER (NOISE FILTER)	1	ACXA73C29300	O
	45	ELECTRONIC CONTROLLER (DISPLAY)	1	CWA747223	O

SAFETY	REF.NO.	DESCRIPTION & NAME	QTY.	CU-4Z80TBE	REMARK
	47	REACTOR	1	G0C602J00013	O
	48	TERMINAL BOARD ASS'Y (L, N)	1	CWA28K1195	O
	49	TERMINAL BOARD ASS'Y (1, 2, 3)	4	CWA28K1196	O
	50	CONTROL BOARD COVER (TOP PCB)	1	CWH131613	
	51	CABINET REAR PLATE - COMPLETE	1	CWE02C1078	
	52	CABINET TOP PLATE	1	CWE03C1150	
	53	CABINET SIDE PLATE - COMPLETE	1	CWE04C1462	
	54	CABINET FRONT PLATE	1	CWE06C1475	
	55	CABINET SIDE PLATE	1	CWE041734A	
	56	CABINET FRONT PLATE - COMPLETE	1	CWE06C1476	
	57	WIRE NET	1	CWD041203A	
	58	HANDLE	2	CWE161021	
	59	TERMINAL COVER	1	CWH171039A	
	60	NUT - TERMINAL COVER	1	CWH7080300J	
	61	INSTALLATION INSTRUCTION	1	ACXF60-16610	
	62	INSTALLATION INSTRUCTION	1	ACXF60-16620	
	63	INSTALLATION INSTRUCTION	1	ACXF60-16630	
	64	INSTALLATION INSTRUCTION	1	ACXF60-16640	
	65	INSTALLATION INSTRUCTION	1	ACXF60-16650	
	66	INSTALLATION INSTRUCTION	1	ACXF60-16660	
	67	INSTALLATION INSTRUCTION	1	ACXF60-16670	
	68	INSTALLATION INSTRUCTION	1	ACXF60-16680	
	69	INSTALLATION INSTRUCTION	1	ACXF60-16690	
	74	ACCESSORY CO. (DRAIN ELBOW)	1	CWG87C900	
	78	TUBE ASS'Y (LIQUID)	1	CWT029448	
	79	TUBE ASS'Y (GAS)	1	ACXT00-51010	
	80	INSTALLATION INSTRUCTION	1	ACXF60-16700	
	81	INSTALLATION INSTRUCTION	1	ACXF60-16710	
	82	FLEXIBLE PIPE (L-TUBE)	1	CWH5850080	
	83	PACKING - L.TUBE	1	CWB81012	
	84	PANASONIC BADGE	1	CWE373439	
	85	LEAD WIRE - COMPRESSOR	1	CWA68C1395	
	86	HOLDER - SENSOR	5	CWH321111	
	87	SOUND PROOF MATERIAL	1	CWG302802	

(Note)

- All parts are supplied from PAPAMY, Malaysia (Vendor Code: 00029488).
- "O" marked parts are recommended to be kept in stock.

SAFETY	REF.NO.	DESCRIPTION & NAME	QTY.	CU-5Z90TBE	REMARK
	1	BASE PAN ASS'Y	1	CWD52K1345A	
	2	SOUND-PROOF BOARD	1	CWH151367	
	3	FAN MOTOR BRACKET	1	CWD54K1081	
	4	SCREW-FAN MOTOR BRACKET	3	CWH551217	
	5	CONDENSER COMPLETE	1	ACXB32C14960	
	6	FAN MOTOR	1	L6CBYYL0098	O
	7	SCREW-FAN MOTOR MOUNT	4	CWH551323	
	8	PROPELLER FAN ASSY	1	CWH03K1075	
	9	NUT	1	CWH561092	
	10	COMPRESSOR	1	9KD240XBB21	O
	12	BUSHING - COMPRESSOR MOUNT	3	CWH50055	
	13	NUT-COMPRESSOR MOUNT	3	CWH561049	
	14	CRANKCASE HEATER	1	CWA341093	
	16	ACCUMULATOR	1	CWB131064	
	17	3-WAYS VALVE(GAS)	1	CWB011769	O
	18	3-WAY VALVE(LIQUID)	1	CWB011770	O
	19	HOLDER COUPLING	1	CWH351262	
	20	STRAINER	1	CWB11061	
	21	STRAINER	5	CWB111081	
	22	EXPANSION VALVE	5	CWB051029	O
	23	4-WAYS VALVE	1	CWB001026J	O
	24	DISCHARGE MUFFLER	1	ACXB12-00650	
	25	HEATING PRESSURE SWITCH	1	CWA101013	O
	26	FLARE NUT (1/4)	5	CWT251030	
	27	FLARE NUT (3/8)	5	CWT251031	
	28	SOUND PROOF MATERIAL	1	CWG302804	
	31	SOUND PROOF MATERIAL	1	CWG302801	
	32	SENSOR-COMPLETE(DISCHARGE TEMP SENSOR CN-DIS)	1	CWA50C3091	O
	33	V-COIL CO.(4 WAY VALVE CN-HOT)	1	CWA43C2586	O
	34	V-COIL CO.(EXPAND VALVE-WHITE CN-EV1)	1	CWA43C2587	O
	35	V-COIL CO.(EXPAND VALVE-YELLOW CN-EV2)	1	CWA43C2588	O
	36	V-COIL CO.(EXPAND VALVE-BLUE CN-EV3)	1	CWA43C2589	O
	37	V-COIL CO.(EXPAND VALVE-RED CN-EV4)	1	CWA43C2590	O
	38	SENSOR-COMPLETE(DEFROST TEMP SENSOR CN-TH2)	1	CWA50C3087	O
	39	SENSOR-COMPLETE(OUTDOOR TEMP SENSOR CN-TH1)	1	ACXA50C00930	O
	40	SENSOR-COMPLETE(CN-TH4)	1	CWA50C3089	O
	41	SENSOR-COMPLETE(CN-TH3)	1	CWA50C3090	O
	42	V-COIL CO.(EXPAND VALVE-BLACK CN-EV5)	1	CWA43C2591	
	43	ELECTRONIC CONTROLLER-MAIN	1	ACXA73C30440R	O
	44	ELECTRONIC CONTROLLER(NOISE FILTER)	1	ACXA73C29300	O

SAFETY	REF.NO.	DESCRIPTION & NAME	QTY.	CU-5Z90TBE	REMARK
	45	ELECTRONIC CONTROLLER(DISPLAY)	1	CWA747223	O
	47	REACTOR	1	G0C602J00013	O
	48	TERMINAL BOARD ASS'Y (L,N)	1	CWA28K1195	O
	49	TERMINAL BOARD ASS'Y(1,2,3)	5	CWA28K1196	O
	50	CONTROL BOARD COVER(TOP PCB)	1	CWH131613	
	51	CABINET REAR PLATE-COMPLETE	1	CWE02C1078	
	52	CABINET TOP PLATE	1	CWE03C1150	
	53	CABINET SIDE PLATE-COMPLETE	1	CWE04C1462	
	54	CABINET FRONT PLATE	1	CWE06C1475	
	55	CABINET SIDE PLATE	1	CWE041734A	
	56	CABINET FRONT PLATE-COMPLETE	1	CWE06C1476	
	57	WIRE NET	1	CWD041203A	
	58	HANDLE	2	CWE161021	
	59	TERMINAL COVER	1	CWH171039A	
	60	NUT - TERMINAL COVER	1	CWH7080300J	
	61	INSTALLATION INSTRUCTION	1	ACXF60-16610	
	62	INSTALLATION INSTRUCTION	1	ACXF60-16620	
	63	INSTALLATION INSTRUCTION	1	ACXF60-16630	
	64	INSTALLATION INSTRUCTION	1	ACXF60-16640	
	65	INSTALLATION INSTRUCTION	1	ACXF60-16650	
	66	INSTALLATION INSTRUCTION	1	ACXF60-16660	
	67	INSTALLATION INSTRUCTION	1	ACXF60-16670	
	68	INSTALLATION INSTRUCTION	1	ACXF60-16680	
	69	INSTALLATION INSTRUCTION	1	ACXF60-16690	
	74	ACCESSORY CO.(DRAIN ELBOW)	1	CWG87C900	
	78	TUBE ASS'Y (LIQUID)	1	CWT029390	
	79	TUBE ASS'Y (GAS)	1	ACXT00-50990	
	80	INSTALLATION INSTRUCTION	1	ACXF60-16700	
	81	INSTALLATION INSTRUCTION	1	ACXF60-16710	
	82	FLEXIBLE PIPE (L-TUBE)	1	CWH5850080	
	83	PACKING-L.TUBE	1	CWB81012	
	84	PANASONIC BADGE	1	CWE373439	
	85	LEAD WIRE-COMPRESSOR	1	CWA68C1395	
	86	HOLDER-SENSOR	5	CWH321111	
	87	SOUND PROOF MATERIAL	1	CWG302802	

(Note)

- All parts are supplied from PAPAMY, Malaysia (Vendor Code: 00029488).
- “O” marked parts are recommended to be kept in stock.