

## 18.3 Error Codes Table

Diagnosis display	Abnormality / Protection control	Abnormality Judgment	Protection Operation	Problem	Check location
H00	No memory of failure	—	Normal operation	—	—
H11	Indoor/outdoor abnormal communication	After operation for 1 minute	Indoor fan only operation can start by entering into force cooling operation	Indoor/outdoor communication not establish	<ul style="list-style-type: none"> <li>Indoor/outdoor wire terminal</li> <li>Indoor/outdoor PCB</li> <li>Indoor/outdoor connection wire</li> </ul>
H12	Indoor unit capacity unmatched	90s after power supply	—	Total indoor capability more than maximum limit or less than minimum limit, or number of indoor unit less than two	<ul style="list-style-type: none"> <li>Indoor/outdoor connection wire</li> <li>Indoor/outdoor PCB</li> <li>Specification and combination table in catalogue</li> </ul>
H14	Indoor intake air temperature sensor abnormality	Continuous for 5s	—	Indoor intake air temperature sensor open or short circuit	<ul style="list-style-type: none"> <li>Indoor intake air temperature sensor lead wire and connector</li> </ul>
H15	Compressor temperature sensor abnormality	Continuous for 5s	—	Compressor temperature sensor open or short circuit	<ul style="list-style-type: none"> <li>Compressor temperature sensor lead wire and connector</li> </ul>
H16	Outdoor current transformer (CT) abnormality	—	—	Current transformer faulty or compressor faulty	<ul style="list-style-type: none"> <li>Outdoor PCB faulty or compressor faulty</li> </ul>
H19	Indoor fan motor mechanism lock	Continuous happen for 7 times	—	Indoor fan motor lock or feedback abnormal	<ul style="list-style-type: none"> <li>Fan motor lead wire and connector</li> <li>Fan motor lock or block</li> </ul>
H21	Indoor float switch operation abnormal	—	—	—	—
H23	Indoor heat exchanger temperature sensor abnormality	Continuous for 5s	—	Indoor heat exchanger temperature sensor open or short circuit	<ul style="list-style-type: none"> <li>Indoor heat exchanger temperature sensor lead wire and connector</li> </ul>
H24	Indoor heat exchanger temperature sensor 2 abnormality	Continuous for 5s	—	Indoor heat exchanger temperature sensor 2 open or short circuit	<ul style="list-style-type: none"> <li>Indoor heat exchanger temperature sensor 2 lead wire and connector</li> </ul>
H27	Outdoor air temperature sensor abnormality	Continuous for 5s	—	Outdoor air temperature sensor open or short circuit	<ul style="list-style-type: none"> <li>Outdoor air temperature sensor lead wire and connector</li> </ul>
H28	Outdoor heat exchanger temperature sensor 1 abnormality	Continuous for 5s	—	Outdoor heat exchanger temperature sensor 1 open or short circuit	<ul style="list-style-type: none"> <li>Outdoor heat exchanger temperature sensor 1 lead wire and connector</li> </ul>
H30	Outdoor discharge pipe temperature sensor abnormality	Continuous for 5s	—	Outdoor discharge pipe temperature sensor open or short circuit	<ul style="list-style-type: none"> <li>Outdoor discharge pipe temperature sensor lead wire and connector</li> </ul>
H32	Outdoor heat exchanger temperature sensor 2 abnormality	Continuous for 5s	—	Outdoor heat exchanger temperature sensor 2 open or short circuit	<ul style="list-style-type: none"> <li>Outdoor heat exchanger temperature sensor 2 lead wire and connector</li> </ul>
H33	Indoor / outdoor misconnection abnormality	—	—	Indoor and outdoor rated voltage different	<ul style="list-style-type: none"> <li>Indoor and outdoor units check</li> </ul>
H35	Indoor drain water adverse current abnormal	—	—	—	—
H36	Outdoor gas pipe temperature sensor abnormality	Continuous for 5s	Heating protection operation only	Outdoor gas pipe temperature sensor open or short circuit	<ul style="list-style-type: none"> <li>Outdoor gas pipe temperature sensor lead wire and connector</li> </ul>
H37	Outdoor liquid pipe temperature sensor abnormality	Continuous for 5s	Cooling protection operation only	Outdoor liquid pipe temperature sensor open or short circuit	<ul style="list-style-type: none"> <li>Outdoor liquid pipe temperature sensor lead wire and connector</li> </ul>
H38	Indoor/Outdoor mismatch (brand code)	—	—	Brand code not match	<ul style="list-style-type: none"> <li>Check indoor unit and outdoor unit</li> </ul>
H39	Abnormal indoor operating unit or standby units	3 times happen within 40 minutes	—	Wrong wiring and connecting pipe, expansion valve abnormality, indoor heat exchanger sensor open circuit	<ul style="list-style-type: none"> <li>Check indoor/outdoor connection wire and connection pipe</li> <li>Indoor heat exchanger sensor lead wire and connector</li> <li>Expansion valve and lead wire and connector</li> </ul>

Diagnosis display	Abnormality / Protection control	Abnormality Judgment	Protection Operation	Problem	Check location
H41	Abnormal wiring or piping connection	—	—	Wrong wiring and connecting pipe, expansion valve abnormality	<ul style="list-style-type: none"> <li>• Check indoor/outdoor connection wire and connection pipe</li> <li>• Expansion valve and lead wire and connector</li> </ul>
H64	Outdoor high pressure sensor abnormality	Continuous for 1 minutes	—	High pressure sensor open circuit during compressor stop	<ul style="list-style-type: none"> <li>• High pressure sensor</li> <li>• Lead wire and connector</li> </ul>
H97	Outdoor fan motor mechanism lock	2 times happen within 30 minutes	—	Outdoor fan motor lock or feedback abnormal	<ul style="list-style-type: none"> <li>• Outdoor fan motor lead wire and connector</li> <li>• Fan motor lock or block</li> </ul>
H98	Indoor high pressure protection	—	—	Indoor high pressure protection (Heating)	<ul style="list-style-type: none"> <li>• Check indoor heat exchanger</li> <li>• Air filter dirty</li> <li>• Air circulation short circuit</li> </ul>
H99	Indoor operating unit freeze protection	—	—	Indoor freeze protection (Cooling)	<ul style="list-style-type: none"> <li>• Check indoor heat exchanger</li> <li>• Air filter dirty</li> <li>• Air circulation short circuit</li> </ul>
F11	4-way valve switching abnormality	4 times happen within 30 minutes	—	4-way valve switching abnormal	<ul style="list-style-type: none"> <li>• 4-way valve</li> <li>• Lead wire and connector</li> </ul>
F17	Indoor standby units freezing abnormality	3 times happen within 40 minutes	—	Wrong wiring and connecting pipe, expansion valve leakage, indoor heat exchanger sensor open circuit	<ul style="list-style-type: none"> <li>• Check indoor/outdoor connection wire and pipe</li> <li>• Indoor heat exchanger sensor lead wire and connector</li> <li>• Expansion valve lead wire and connector</li> </ul>
F90	Power factor correction (PFC) circuit protection	4 times happen within 10 minutes	—	Power factor correction circuit abnormal	<ul style="list-style-type: none"> <li>• Outdoor PCB faulty</li> </ul>
F91	Refrigeration cycle abnormality	2 times happen within 20 minutes	—	Refrigeration cycle abnormal	<ul style="list-style-type: none"> <li>• Insufficient refrigerant or valve close</li> </ul>
F93	Compressor abnormal revolution	4 times happen within 20 minutes	—	Compressor abnormal revolution	<ul style="list-style-type: none"> <li>• Power transistor module faulty or compressor lock</li> </ul>
F94	Compressor discharge overshoot protection	4 times happen within 30 minutes	—	Compressor discharge pressure overshoot	<ul style="list-style-type: none"> <li>• Check refrigeration system</li> </ul>
F95	Outdoor cooling high pressure protection	4 times happen within 20 minutes	—	Cooling high pressure protection	<ul style="list-style-type: none"> <li>• Check refrigeration system</li> <li>• Outdoor air circuit</li> </ul>
F96	Power transistor module overheating protection	4 times happen within 30 minutes	—	Power transistor module overheat	<ul style="list-style-type: none"> <li>• PCB faulty</li> <li>• Outdoor air circuit (fan motor)</li> </ul>
F97	Compressor overheating protection	3 times happen within 30 minutes	—	Compressor overheat	<ul style="list-style-type: none"> <li>• Insufficient refrigerant</li> </ul>
F98	Total running current protection	3 times happen within 20 minutes	—	Total current protection	<ul style="list-style-type: none"> <li>• Check refrigeration system</li> <li>• Power source or compressor lock</li> </ul>
F99	Outdoor direct current (DC) peak detection	Continuous happen for 7 times	—	Power transistor module current protection	<ul style="list-style-type: none"> <li>• Power transistor module faulty or compressor lock</li> </ul>



SAFETY	REF NO.	PART NAME & DESCRIPTION	QTY.	CS-Z25UD3EAW	CS-Z35UD3EAW	REMARK
	1	CABINET TOP PLATE - COMPLETE	1	CWE03C1169	←	
	2	FOAMED STYRENE COMPLETE	1	CWG07C1094	←	
	3	FOAMED STYRENE COMPLETE	1	CWG07C1089	←	
	4	FOAMED STYRENE COMPLETE	1	CWG07C1090	←	
	5	BULKHEAD	1	CWD531059	←	
	6	CABINET SIDE PLATE - COMPLETE	1	CWE04C1565	←	
	7	CABINET SIDE PLATE - COMPLETE	1	CWE04C1566	←	
	8	PARTICULAR PLATE	4	CWD912571	←	
	9	FAN MOTOR BRACKET	1	CWD541246	←	
	10	SCREW - FAN MOTOR BRACKET	6	CWH55406J	←	
	11	PUMP - COMPLETE	1	CWB53C1056	←	O
	12	ANTI - VIBRATION BUSHING	3	CWH501131	←	
⚠	13	FLOAT SWITCH COMPLETE	1	CWA12C1034	←	O
	14	DRAIN NOZZLE	1	CWH411027	←	
	15	FLEXIBLE PIPE - COMPLETE	1	CWH85C1120	←	
	16	PLATE SPRING	1	CWH711022	←	
	17	WIRE SPRING	1	CWH722018	←	
	18	PARTICULAR PIECE - COMPLETE	1	CWD93C1191	←	
	19	FIN & TUBE EVAPORATER - COMPLETE	1	ACXB30C16720	←	O
	20	FLARE NUT (1/4")	1	CWT251030	←	
	21	FLARE NUT (3/8")	1	CWT251031	←	
	22	HOLDER - SENSOR	2	CWH32143	←	
	23	SENSOR COMPLETE	1	ACXA50C00030	←	O
	24	BLOWER WHEEL ASS'Y	2	CWH01K1041	←	
⚠	25	FAN MOTOR	1	L6CBYYYYL0179	←	O
	26	FAN MOTOR BRACKET	2	CWD541265	←	
	27	SCREW - FAN MOTOR BRACKET	2	CWH551049J	←	
	28	AIR GUIDER B.W.	2	CWD321112	←	
	29	AIR GUIDER B.W.	2	CWD321113	←	
	30	DRAIN PAN - COMPLETE	1	CWH40C1134	←	
	31	CONTROL BOARD A'SSY	1	CWH10K1262	←	
⚠	32	ELECTRONIC CONTROLLER - (MAIN)	1	ACXA73C40600	ACXA73C40610	O
⚠	33	TERMINAL BOARD ASS'Y	1	CWA28K1161	←	
⚠	35	TRANSFORMER - COMPLETE	1	CWA40C1106	←	O
	36	CONTROL BOARD COVER	1	ACXH13C04450	←	
	37	CABINET BOTTOM PLATE - COMPLETE	1	CWE05C1014	←	
	38	CABINET TOP PLATE	1	CWE031215	←	
	39	AIR FILTER	1	CWD001390	←	
	40	ACCESSORY - COMPLETE	1	CWH82C2111	←	
	41	WIRED REMOTE CONTROL COMPLETE	1	CWA75C4264	←	O
	42	REMOTE CONTROL CABLE	1	CWA221081	←	
	43	OPERATING INSTRUCTION	1	ACXF55-17690	←	
	44	OPERATING INSTRUCTION	1	ACXF55-17700	←	
	45	OPERATING INSTRUCTION	1	ACXF55-17960	←	
	46	INSTALLATION INSTRUCTION	1	ACXF60-26230	←	
	47	INSTALLATION INSTRUCTION	1	ACXF60-26240	←	
	48	INSTALLATION INSTRUCTION	1	ACXF60-26250	←	
	49	INSTALLATION INSTRUCTION	1	ACXF60-26260	←	
	50	INSTALLATION INSTRUCTION	1	ACXF60-26270	←	
	51	INSTALLATION INSTRUCTION	1	ACXF60-26280	←	

SAFETY	REF NO.	PART NAME & DESCRIPTION	QTY.	CS-Z25UD3EAW	CS-Z35UD3EAW	REMARK
	52	INSTALLATION INSTRUCTION	1	ACXF60-26290	←	
	53	INSTALLATION INSTRUCTION	1	ACXF60-26300	←	
	54	INSTALLATION INSTRUCTION	1	ACXF60-26310	←	
	55	INSTALLATION INSTRUCTION	1	ACXF60-26320	←	
	56	INSTALLATION INSTRUCTION	1	ACXF60-26330	←	
	57	INSTALLATION INSTRUCTION	1	ACXF60-26340	←	
	58	INSTALLATION INSTRUCTION	1	ACXF60-26350	←	
	59	INSTALLATION INSTRUCTION	1	ACXF60-26360	←	
	60	INSTALLATION INSTRUCTION	1	ACXF60-26370	←	
	62	BASE BOARD - COMPLETE	1	CWG62C1218	←	
	63	SHOCK ABSORBER	1	CWG713781	←	
	64	SHOCK ABSORBER	1	CWG713782	←	
	65	C. C. CASE	1	CWG581523	←	

(NOTE)

- All parts are supplied from PAPAMY, Malaysia (Vendor Code: 00029488).
- “O” marked parts are recommended to be kept in stock.

SAFETY	REF NO.	PART NAME & DESCRIPTION	QTY.	CS-Z50UD3EAW	CS-Z60UD3EAW	REMARK
	1	CABINET TOP PLATE - COMPLETE	1	CWE03C1169	←	
	2	FOAMED STYRENE COMPLETE	1	CWG07C1094	←	
	3	FOAMED STYRENE COMPLETE	1	CWG07C1089	←	
	4	FOAMED STYRENE COMPLETE	1	CWG07C1090	←	
	5	BULKHEAD	1	CWD531059	←	
	6	CABINET SIDE PLATE - COMPLETE	1	CWE04C1565	←	
	7	CABINET SIDE PLATE - COMPLETE	1	CWE04C1566	←	
	8	PARTICULAR PLATE	4	CWD912571	←	
	9	FAN MOTOR BRACKET	1	CWD541246	←	
	10	SCREW - FAN MOTOR BRACKET	6	CWH55406J	←	
	11	PUMP - COMPLETE	1	CWB53C1056	←	O
	12	ANTI - VIBRATION BUSHING	3	CWH501131	←	
⚠	13	FLOAT SWITCH COMPLETE	1	CWA12C1034	←	O
	14	DRAIN NOZZLE	1	CWH411027	←	
	15	FLEXIBLE PIPE - COMPLETE	1	CWH85C1120	←	
	16	PLATE SPRING	1	CWH711022	←	
	17	WIRE SPRING	1	CWH722018	←	
	18	PARTICULAR PIECE - COMPLETE	1	CWD93C1191	←	
	19	FIN & TUBE EVAPORATER - COMPLETE	1	ACXB30C10370	←	O
	20	FLARE NUT (1/4")	1	CWT251030	←	
	21	FLARE NUT (1/2")	1	CWT251032	←	
	22	HOLDER - SENSOR	2	CWH32143	←	
	23	SENSOR COMPLETE	1	ACXA50C00030	←	O
	24	BLOWER WHEEL ASS'Y	2	CWH01K1041	←	
⚠	25	FAN MOTOR	1	L6CBYYYL0179	←	O
	26	FAN MOTOR BRACKET	2	CWD541265	←	
	27	SCREW - FAN MOTOR BRACKET	2	CWH551049J	←	
	28	AIR GUIDER B.W.	2	CWD321112	←	
	29	AIR GUIDER B.W.	2	CWD321113	←	
	30	DRAIN PAN - COMPLETE	1	CWH40C1134	←	
	31	CONTROL BOARD A'SSY	1	CWH10K1262	←	
⚠	32	ELECTRONIC CONTROLLER - (MAIN)	1	ACXA73C40620	ACXA73C40630	O
⚠	33	TERMINAL BOARD ASS'Y	1	CWA28K1161	←	
⚠	35	TRANSFORMER - COMPLETE	1	CWA40C1106	←	O
	36	CONTROL BOARD COVER	1	ACXH13C04450	←	
	37	CABINET BOTTOM PLATE - COMPLETE	1	CWE05C1014	←	
	38	CABINET TOP PLATE	1	CWE031215	←	
	39	AIR FILTER	1	CWD001390	←	
	40	ACCESSORY - COMPLETE	1	CWH82C2111	←	
	41	WIRED REMOTE CONTROL COMPLETE	1	CWA75C4264	←	O
	42	REMOTE CONTROL CABLE	1	CWA221081	←	
	43	OPERATING INSTRUCTION	1	ACXF55-17690	←	
	44	OPERATING INSTRUCTION	1	ACXF55-17700	←	
	45	OPERATING INSTRUCTION	1	ACXF55-17960	←	
	46	INSTALLATION INSTRUCTION	1	ACXF60-26230	←	
	47	INSTALLATION INSTRUCTION	1	ACXF60-26240	←	
	48	INSTALLATION INSTRUCTION	1	ACXF60-26250	←	
	49	INSTALLATION INSTRUCTION	1	ACXF60-26260	←	
	50	INSTALLATION INSTRUCTION	1	ACXF60-26270	←	
	51	INSTALLATION INSTRUCTION	1	ACXF60-26280	←	

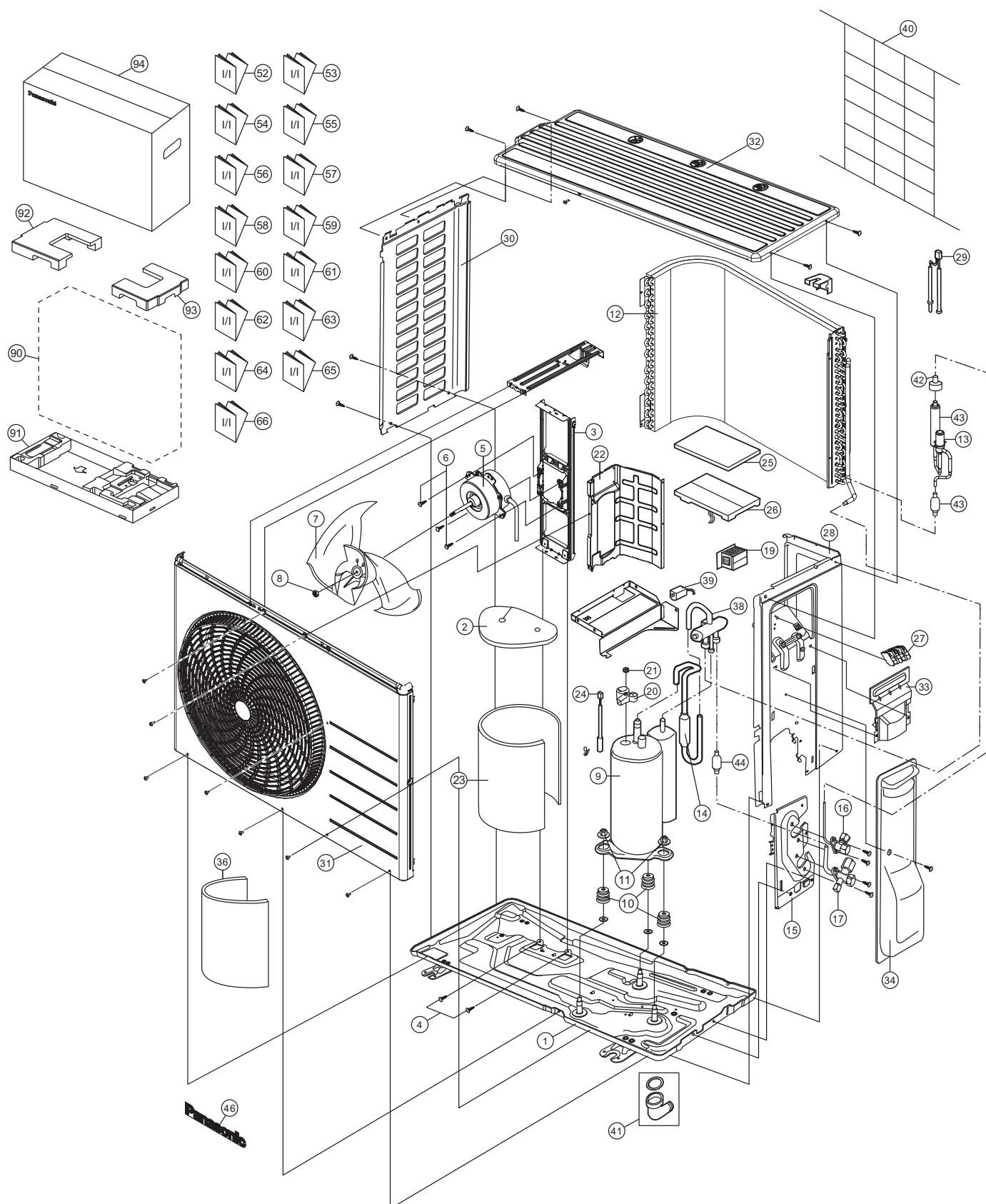
SAFETY	REF NO.	PART NAME & DESCRIPTION	QTY.	CS-Z50UD3EAW	CS-Z60UD3EAW	REMARK
	52	INSTALLATION INSTRUCTION	1	ACXF60-26290	←	
	53	INSTALLATION INSTRUCTION	1	ACXF60-26300	←	
	54	INSTALLATION INSTRUCTION	1	ACXF60-26310	←	
	55	INSTALLATION INSTRUCTION	1	ACXF60-26320	←	
	56	INSTALLATION INSTRUCTION	1	ACXF60-26330	←	
	57	INSTALLATION INSTRUCTION	1	ACXF60-26340	←	
	58	INSTALLATION INSTRUCTION	1	ACXF60-26350	←	
	59	INSTALLATION INSTRUCTION	1	ACXF60-26360	←	
	60	INSTALLATION INSTRUCTION	1	ACXF60-26370	←	
	62	BASE BOARD - COMPLETE	1	CWG62C1218	←	
	63	SHOCK ABSORBER	1	CWG713781	←	
	64	SHOCK ABSORBER	1	CWG713782	←	
	65	C. C. CASE	1	CWG581523	←	

(NOTE)

- All parts are supplied from PAPAMY, Malaysia (Vendor Code: 00029488).
- “O” marked parts are recommended to be kept in stock.

## 22.2 Outdoor Unit

### 22.2.1 CU-Z25UBEA



**Note**  
The above exploded view is for the purpose of parts disassembly and replacement.  
The non-numbered parts are not kept as standard service parts.



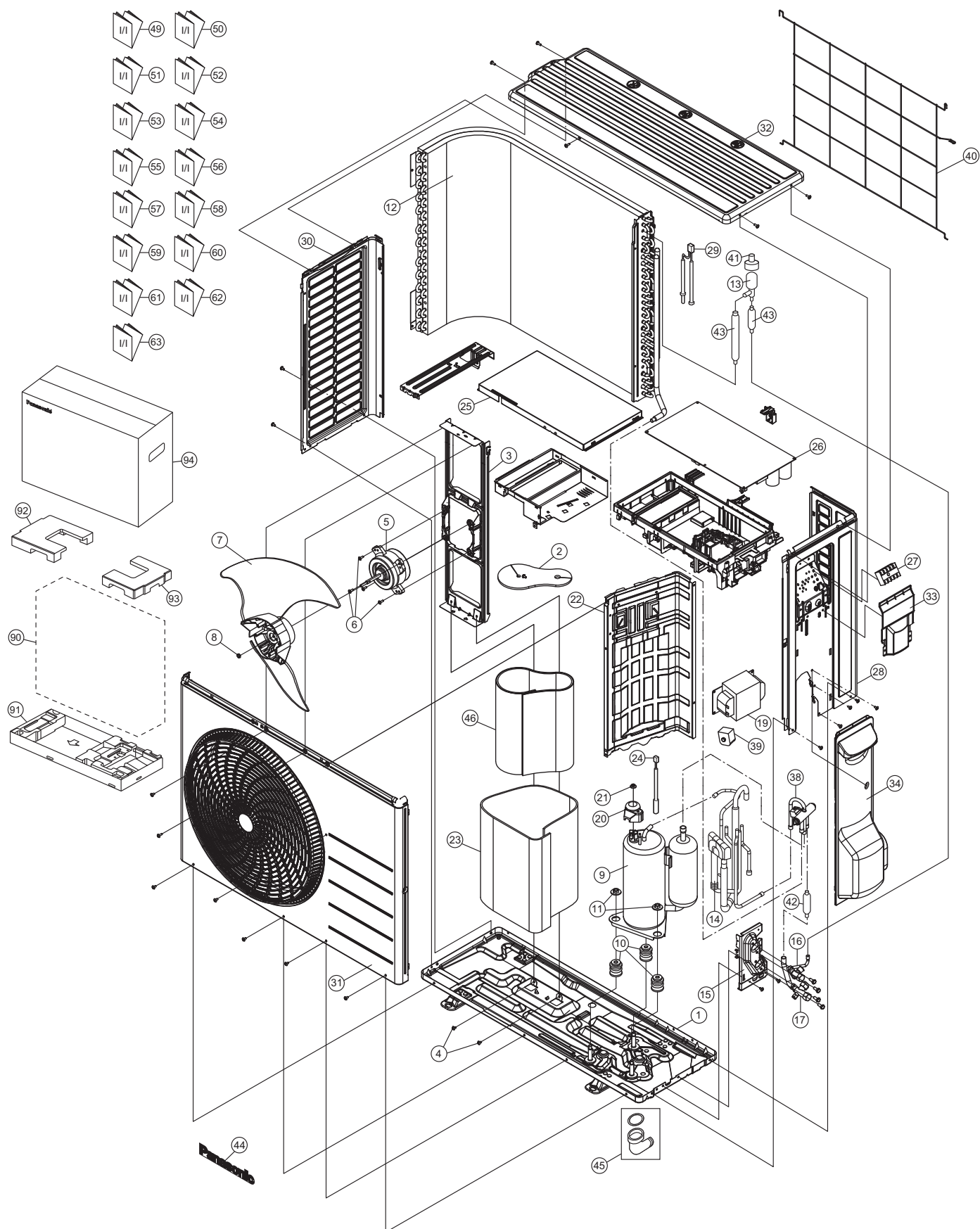
SAFETY	REF. NO.	PART NAME & DESCRIPTION	QTY.	CU-Z25UBEA	REMARK
	1	CHASSIS COMPLETE	1	CWD52K1399	
	2	SOUND PROOF MATERIAL (TOP)	1	CWG302314	
	3	FAN MOTOR BRACKET	1	CWD541157	
	4	SCREW - FAN MOTOR BRACKET	2	CWH551217	
⚠	5	FAN MOTOR	1	L6CAYYYL0064	O
	6	SCREW - FAN MOTOR MOUNT	4	CWH55252J	
	7	PROPELLER FAN ASSY	1	CWH03K1100	
	8	NUT - PROPELLER FAN	1	CWH56053J	
⚠	9	COMPRESSOR	1	9RS102XFA21	O
	10	ANTI - VIBRATION BUSHING	3	CWH50077	
	11	NUT - COMPRESSOR MOUNT	3	CWH561096	
	12	CONDENSER	1	ACXB32C00760	
	13	EXPANSION VALVE	1	CWB051078	
	14	DISCHARGE MUFFLER (4 W.VALVE)	1	CWB121010	
	15	HOLDER COUPLING	1	CWH351233	
	16	2-WAYS VALVE (LIQUID)	1	ACXB02-02650	O
	17	3-WAY VALVE (GAS)	1	CWB011581	O
⚠	19	REACTOR	1	G0C392J00028	O
	20	TERMINAL COVER	1	CWH171039A	
	21	NUT - TERMINAL COVER	1	CWH7080300J	
	22	SOUND PROOF BOARD	1	CWH151428	
	23	SOUND PROOF MATERIAL	1	CWG302948	
	24	SENSOR CO - COMP TEMP	1	CWA50C2205	O
	25	CONTROL BOARD COVER - TOP	1	ACXH13-00450	
⚠	26	ELECTRONIC CONTROLLER - MAIN	1	ACXA73C39660R	O
⚠	27	TERMINAL BOARD ASSY	1	CWA28K1110J	O
	28	CABINET SIDE PLATE CO.	1	ACXE04C00460	
	29	SENSOR CO - AIR TEMP AND PIPE TEMP	1	CWA50C3079	O
	30	CABINET SIDE PLATE (LEFT)	1	CWE041858A	
	31	CABINET FRONT PLATE CO.	1	CWE06C1566	
	32	CABINET TOP PLATE	1	CWE031230A	
	33	PLATE - C. B. COVER TERMINAL	1	CWH131301	
	34	CONTROL BOARD COVER CO.	1	CWH13C1359	
	36	SOUND PROOF MATERIAL	1	CWG302316	
	38	4-WAYS VALVE	1	ACXB00-00130	O
⚠	39	V-COIL COMPLETE (4-WAY VALVE)	1	ACXA43C00250	O
	40	WIRE NET	1	ACXD04-00040A	
	41	BAG - COMPLETE	1	CWG87C900	
⚠	42	V-COIL COMPLETE (EXP. VALVE)	1	ACXA43C00640	O
	43	STRAINER	2	CWB111032	
	44	RECEIVER	1	CWB14011	
	46	PANASONIC BADGE	1	CWE373439	
	52	INSTALLATION INSTRUCTION	1	ACXF60-27460	
	53	INSTALLATION INSTRUCTION	1	ACXF60-27470	
	54	INSTALLATION INSTRUCTION	1	ACXF60-27480	
	55	INSTALLATION INSTRUCTION	1	ACXF60-27490	
	56	INSTALLATION INSTRUCTION	1	ACXF60-27500	

SAFETY	REF. NO.	PART NAME & DESCRIPTION	QTY.	CU-Z25UBEA	REMARK
	57	INSTALLATION INSTRUCTION	1	ACXF60-27510	
	58	INSTALLATION INSTRUCTION	1	ACXF60-27520	
	59	INSTALLATION INSTRUCTION	1	ACXF60-27530	
	60	INSTALLATION INSTRUCTION	1	ACXF60-27540	
	61	INSTALLATION INSTRUCTION	1	ACXF60-27550	
	62	INSTALLATION INSTRUCTION	1	ACXF60-27560	
	63	INSTALLATION INSTRUCTION	1	ACXF60-27570	
	64	INSTALLATION INSTRUCTION	1	ACXF60-27580	
	65	INSTALLATION INSTRUCTION	1	ACXF60-27590	
	66	INSTALLATION INSTRUCTION	1	ACXF60-27600	
	90	BAG	1	CWG861078	
	91	BASE BOARD - COMPLETE	1	CWG62C1223	
	92	SHOCK ABSORBER (L)	1	CWG713779	
	93	SHOCK ABSORBER (R)	1	CWG713778	
	94	C. C. CASE	1	ACXG50-06590	

(NOTE)

- All parts are supplied from PAPAMY, Malaysia (Vendor Code: 00029488).
- “O” marked parts are recommended to be kept in stock.

## 22.2.2 CU-Z35UBEA



### Note

The above exploded view is for the purpose of parts disassembly and replacement.  
The non-numbered parts are not kept as standard service parts.

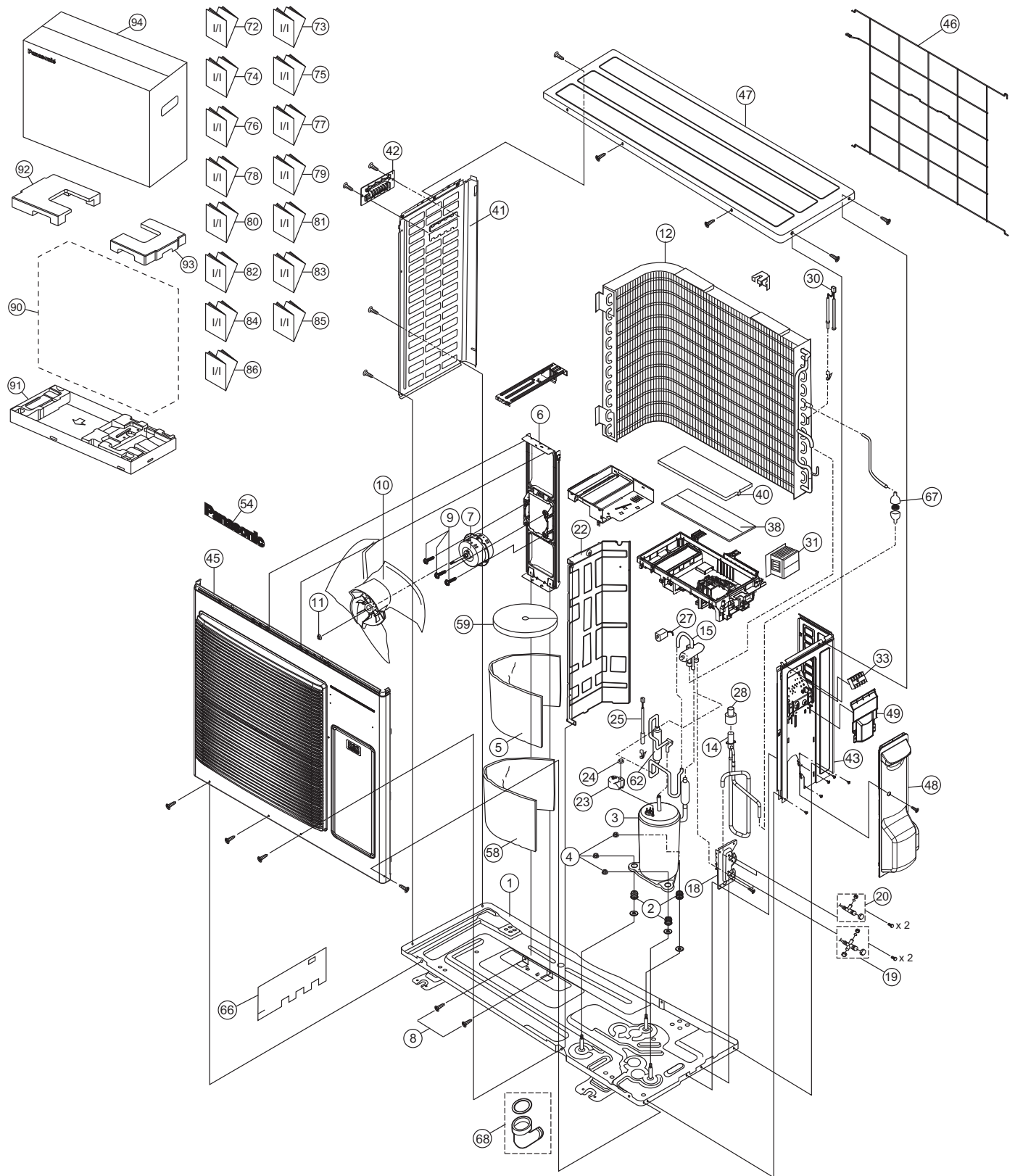
SAFETY	REF. NO.	PART NAME & DESCRIPTION	QTY.	CU-Z35UBEA	REMARK
	1	CHASSIS COMPLETE	1	CWD52K1277	
	2	SOUND PROOF MATERIAL (TOP)	1	CWG302719	
	3	FAN MOTOR BRACKET	1	CWD541167	
	4	SCREW - FAN MOTOR BRACKET	2	CWH551217	
⚠	5	FAN MOTOR	1	L6CAYYYL0064	O
	6	SCREW - FAN MOTOR MOUNT	4	CWH55252J	
	7	PROPELLER FAN ASSY	1	CWH03K1066	
	8	NUT - PROPELLER FAN	1	CWH56053J	
⚠	9	COMPRESSOR	1	9RS102XFA21	O
	10	ANTI - VIBRATION BUSHING	3	CWH50077	
	11	NUT - COMPRESSOR MOUNT	3	CWH561096	
	12	CONDENSER	1	CWB32C3547	
	13	EXPANSION VALVE	1	CWB051078	
	14	DISCHARGE MUFFLER (4 W.VALVE)	1	CWB121010	
	15	HOLDER COUPLING	1	CWH351233	
	16	2-WAYS VALVE (LIQUID)	1	ACXB02-02650	O
	17	3-WAY VALVE (GAS)	1	CWB011581	O
⚠	19	REACTOR	1	G0C392J00028	O
	20	TERMINAL COVER	1	CWH171039A	
	21	NUT - TERMINAL COVER	1	CWH7080300J	
	22	SOUND PROOF BOARD	1	ACXH15-01590	
	23	SOUND PROOF MATERIAL (BODY)	1	CWG302949	
	24	SENSOR CO - COMP TEMP	1	CWA50C2894	O
	25	CONTROL BOARD COVER - TOP	1	CWH131473	
⚠	26	ELECTRONIC CONTROLLER - MAIN	1	ACXA73C39670R	O
⚠	27	TERMINAL BOARD ASSY	1	CWA28K1110J	O
	28	CABINET SIDE PLATE CO. (RIGHT)	1	CWE04C1411	
	29	SENSOR CO - AIR TEMP AND PIPE TEMP	1	CWA50C3078	O
	30	CABINET SIDE PLATE	1	CWE041579A	
	31	CABINET FRONT PLATE CO.	1	ACXE06C02830	
	32	CABINET TOP PLATE	1	CWE031148A	
	33	PLATE - C. B. COVER TERMINAL	1	CWH131470	
	34	CONTROL BOARD COVER CO.	1	CWH13C1253	
	38	4-WAYS VALVE	1	ACXB00-00130	O
⚠	39	V-COIL COMPLETE (4 WAY VALVE)	1	ACXA43C00250	O
	40	WIRE NET	1	CWD041200A	
⚠	41	V-COIL COMPLETE (EXP. VALVE)	1	ACXA43C00640	O
	42	RECEIVER	1	CWB14011	
	43	STRAINER	2	CWB111032	
	44	PANASONIC BADGE	1	CWE373439	
	45	BAG - COMPLETE	1	CWG87C900	
	46	SOUND PROOF MATERIAL	1	CWG302701	
	49	INSTALLATION INSTRUCTION	1	ACXF60-27460	
	50	INSTALLATION INSTRUCTION	1	ACXF60-27470	
	51	INSTALLATION INSTRUCTION	1	ACXF60-27480	
	52	INSTALLATION INSTRUCTION	1	ACXF60-27490	
	53	INSTALLATION INSTRUCTION	1	ACXF60-27500	
	54	INSTALLATION INSTRUCTION	1	ACXF60-27510	
	55	INSTALLATION INSTRUCTION	1	ACXF60-27520	

SAFETY	REF. NO.	PART NAME & DESCRIPTION	QTY.	CU-Z35UBEA	REMARK
	56	INSTALLATION INSTRUCTION	1	ACXF60-27530	
	57	INSTALLATION INSTRUCTION	1	ACXF60-27540	
	58	INSTALLATION INSTRUCTION	1	ACXF60-27550	
	59	INSTALLATION INSTRUCTION	1	ACXF60-27560	
	60	INSTALLATION INSTRUCTION	1	ACXF60-27570	
	61	INSTALLATION INSTRUCTION	1	ACXF60-27580	
	62	INSTALLATION INSTRUCTION	1	ACXF60-27590	
	63	INSTALLATION INSTRUCTION	1	ACXF60-27600	
	90	BAG	1	ACXG86-03760	
	91	BASE BOARD - COMPLETE	1	CWG62C1144	
	92	SHOCK ABSORBER (L)	1	CWG713416	
	93	SHOCK ABSORBER (R)	1	CWG713415	
	94	C. C. CASE	1	CWG568358	

(NOTE)

- All parts are supplied from PAPAMY, Malaysia (Vendor Code: 00029488).
- “O” marked parts are recommended to be kept in stock.

## 22.2.3 CU-Z50UBEA CU-Z60UBEA



### Note

The above exploded view is for the purpose of parts disassembly and replacement.  
The non-numbered parts are not kept as standard service parts.

SAFETY	REF. NO.	PART NAME & DESCRIPTION	QTY.	CU-Z50UBEA	CU-Z60UBEA	REMARK
	1	CHASSIS COMPLETE	1	ACXD52K00320	←	
	2	ANTI - VIBRATION BUSHING	3	CWH50077	←	
⚠	3	COMPRESSOR	1	9RD132XAA21	←	O
	4	NUT - COMPRESSOR MOUNT	3	CWH561096	←	
	5	SOUND PROOF MATERIAL	1	CWG302950	←	
	6	FAN MOTOR BRACKET	1	ACXD54-00140	←	
⚠	7	FAN MOTOR	1	L6CAYYYL0076	←	O
	8	SCREW - FAN MOTOR BRACKET	2	CWH551217	←	
	9	SCREW - FAN MOTOR MOUNT	4	CWH551106J	←	
	10	PROPELLER FAN ASSY	1	ACXH03K00070	←	
	11	NUT - PROPELLER FAN	1	CWH56053J	←	
	12	CONDENSER	1	ACXB32C08610	←	
	14	EXPANSION VALVE	1	CWB051078	←	
	15	4-WAYS VALVE	1	ACXB00-00140	←	O
	18	HOLDER COUPLING	1	ACXH35-00080	←	
	19	3-WAY VALVE (GAS)	1	ACXB01-00580	←	O
	20	2-WAYS VALVE (LIQUID)	1	ACXB02-00210	←	O
	22	SOUND PROOF BOARD	1	ACXH15-00200	←	
	23	TERMINAL COVER	1	CWH171039A	←	
	24	NUT - TERMINAL COVER	1	CWH7080300J	←	
	25	SENSOR CO - COMP. TEMP.	1	CWA50C2185	←	O
⚠	27	V-COIL COMPLETE (4-WAY VALVE)	1	ACXA43C00250	←	O
⚠	28	V-COIL COMPLETE (EXP. VALVE)	1	ACXA43C00640	←	O
	30	SENSOR - COMPLETE (AIR & PIPE TEMP.)	1	CWA50C3079	←	
⚠	31	REACTOR	1	G0C392J00027	G0C392J00029	O
⚠	33	TERMINAL BOARD ASSY	1	CWA28K1110J	←	O
⚠	38	ELECTRONIC CONTROLLER - MAIN	1	ACXA73C39680R	ACXA73C39690R	O
	40	CONTROL BOARD COVER - TOP	1	ACXH13-00490	←	
	41	CABINET SIDE PLATE (LEFT)	1	ACXE04-00580	←	
	42	HANDLE	1	CWE161010	←	
	43	CABINET SIDE PLATE (RIGHT)	1	ACXE04C00720	←	
	45	CABINET FRONT PLATE CO.	1	ACXE06K00050	←	
	46	WIRE NET	1	ACXD04-00130A	←	
	47	CABINET TOP PLATE	1	ACXE03-00170A	←	
	48	CONTROL BOARD COVER - COMPLETE	1	ACXH13C00170	←	
	49	CONTROL BOARD COVER	1	CWH131470	←	
	54	PANASONIC BADGE	1	CWE373439	←	
	58	SOUND PROOF MATERIAL	1	CWG302636	←	
	59	SOUND PROOF MATERIAL	1	CWG302630	←	
	62	RECEIVER	1	CWB14011	←	
	66	SOUND PROOF MATERIAL	1	CWG302632	←	
	67	STRAINER	1	CWB11094	←	
	68	BAG - COMPLETE	1	CWG87C900	←	
	72	INSTALLATION INSTRUCTION	1	ACXF60-27460	←	
	73	INSTALLATION INSTRUCTION	1	ACXF60-27470	←	
	74	INSTALLATION INSTRUCTION	1	ACXF60-27480	←	
	75	INSTALLATION INSTRUCTION	1	ACXF60-27490	←	
	76	INSTALLATION INSTRUCTION	1	ACXF60-27500	←	
	77	INSTALLATION INSTRUCTION	1	ACXF60-27510	←	

SAFETY	REF. NO.	PART NAME & DESCRIPTION	QTY.	CU-Z50UBEA	CU-Z60UBEA	REMARK
	78	INSTALLATION INSTRUCTION	1	ACXF60-27520	←	
	79	INSTALLATION INSTRUCTION	1	ACXF60-27530	←	
	80	INSTALLATION INSTRUCTION	1	ACXF60-27540	←	
	81	INSTALLATION INSTRUCTION	1	ACXF60-27550	←	
	82	INSTALLATION INSTRUCTION	1	ACXF60-27560	←	
	83	INSTALLATION INSTRUCTION	1	ACXF60-27570	←	
	84	INSTALLATION INSTRUCTION	1	ACXF60-27580	←	
	85	INSTALLATION INSTRUCTION	1	ACXF60-27590	←	
	86	INSTALLATION INSTRUCTION	1	ACXF60-27600	←	
	90	BAG	1	CWG861461	←	
	91	BASE BOARD - COMPLETE	1	CWG62C1131	←	
	92	SHOCK ABSORBER (L)	1	CWG713217	←	
	93	SHOCK ABSORBER (R)	1	CWG713218	←	
	94	C. C. CASE	1	CWG568359	←	

(NOTE)

- All parts are supplied from PAPAMY, Malaysia (Vendor Code: 00029488).
- “O” marked parts are recommended to be kept in stock.